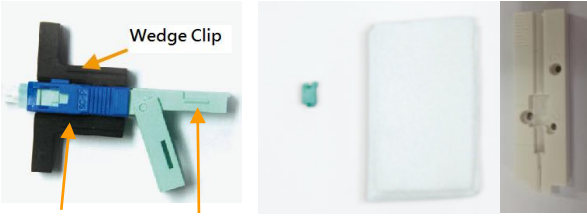


**General:** • This installation & assembly instructions describe the procedure for Optec SwifTerm™ SC connector which applies for *bow-type drop fiber cable termination*.

**Precautions:** • Always wear eye protection when handling optical fibers. Dispose of cut or cleaved fibers properly to avoid skin or eyes damages.  
 • Never look into the connector end which may have a laser coupled to it. Laser light is not visible & may damage your eyes.  
 • The product is sensitive to dirt or dust. Unpack the product until ready for installation.

### 1.0 Components & Tools Required



**Components of Connector Kit Set** \*(20 sets for 1)

- Connector Body
- Cable Lock
- Cable Clamp
- Cleaning Cloth
- Positioning Gasket

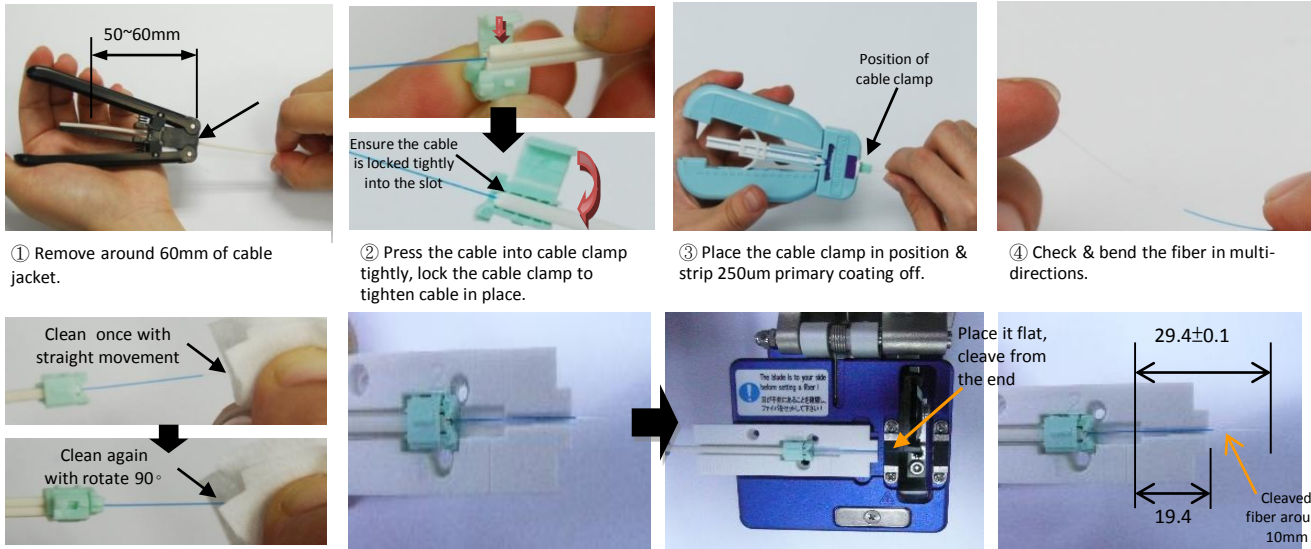
Please refer to below fiber cleaver model for lock screwing position:  
 "1" - SUMITOMO FC-6S  
 "2" - FUJIKURA CT-30  
 "3" - FUJIKURA CT-20



**Assembly Tools Required**

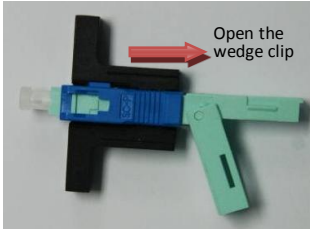
- Micro-stripper
- Cable Jacket Stripper
- Fiber Cleaver

### 2.0 Fiber Cable Preparation

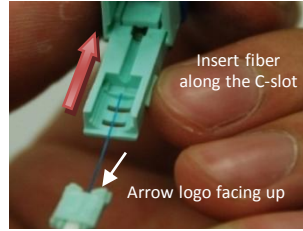


- Remove around 60mm of cable jacket. (50~60mm)
- Press the cable into cable clamp tightly, lock the cable clamp to tighten cable in place. (Ensure the cable is locked tightly into the slot)
- Place the cable clamp in position & strip 250um primary coating off. (Position of cable clamp)
- Check & bend the fiber in multi-directions.
- Clean the stripped fiber with alcohol wipe to remove any debris. (Clean once with straight movement, then clean again with rotate 90°)
- Insert the cable clamp into the positioning gasket and ensure it is secured in place.
- Set the positioning gasket onto cleaver such that 250um fiber's edge is at 10mm and cleave. (Place it flat, cleave from the end)
- Cleaved fiber length should be around 10mm. (Cleaved fiber around 10mm, dimensions: 29.4±0.1, 19.4)

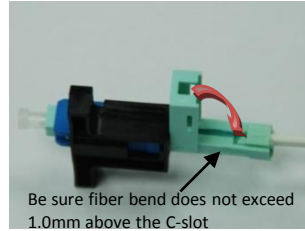
### 3.0 Assembly Procedure



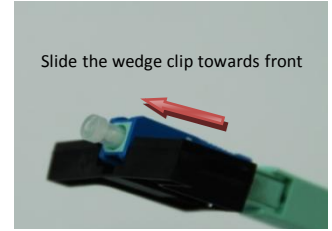
① The wedge clip is locked with connector body. Open the rear part as shown in diagram.



② Insert the cleaved fiber slowly into the rear of connector until connection is made.



③ Make a bend in the fiber to maintain connection. Close the lid when done.



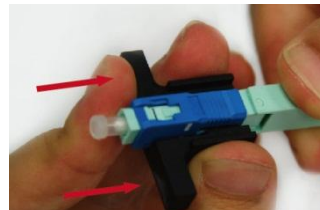
④ Release the wedge clip and complete.

**\*\* Keep the ferrule's dust cap on until ready for installation**

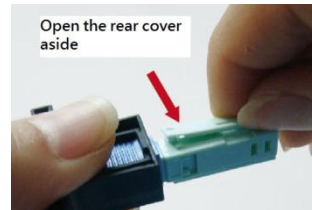
### 4.0 Disassembly Procedure



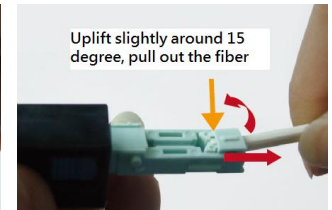
① Assemble the wedge clip.



② Unlock the fiber.



③ Open the rear cover aside.



④ Pull out the fiber and reassemble the rear cover.

**\*\* Assembly repeatability is more than 5 times with proper handling**