

Optec offers two types of wall mountable fiber boxes: Type-86 and 4-Port options. Both can be used for FTTH (Fiber to the Home) and FTTD (Fiber to the Desk) for terminating fiber optic cables to pigtails at the demarcation point inside the subscriber's premises. With light, convenient and user-friendly design, these fiber outlets can be easily used in home and business environments.



Features and Applications

2 ports outlet with choices of SC Simplex or LC Duplex adapters, terminating of up to 4 fibers

Suitable for various modules and multimedia interfaces

Support MM or SM fiber connection with 900µm fiber pigtails for both G652 and G657 applications

High adoptability for various applications

Removable clasp cover

Easy mounting requiring minimal amount of tools for quicker installation

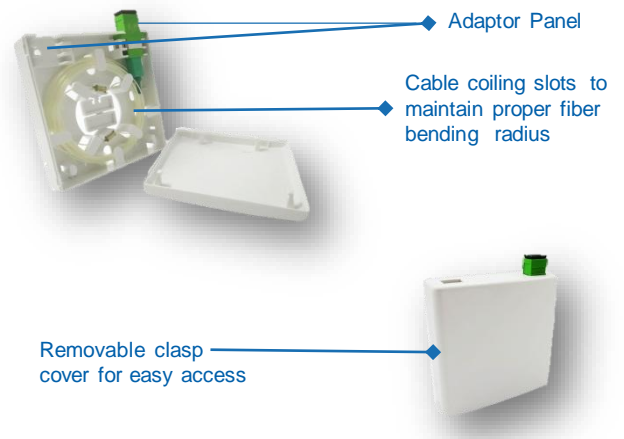
Optional inclusion of loaded fiber pigtails

Satisfies client's requirements and needs

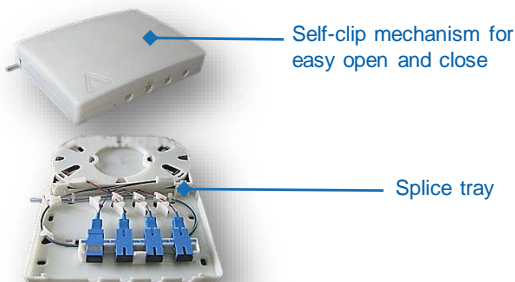
Radian appearance with compact space-saving for space constrained

Satisfies client's requirements and needs

Type-86



4- Port



Suitable for various modules and multimedia interfaces

4 ports outlet with choice of SC Simplex or LC Duplex fiber optic adapters, with terminating up to 4 fibers or 8 fibers (only for 900µm LC Duplex)

Self-clip base and recessed adapter panel design for optimizing space utilization

Ease of installation and high durability more than 200 times

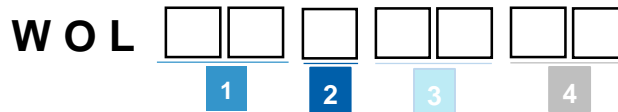
Plastic splice tray design

Suitable for pigtails, ribbon and bunched cable distribution

Specifications

	Type-86	4-Port
Dimension (H x W x D)	86 x 86 x 10 (mm)	28 x 150 x 110 (mm)
Weight	0.5 kg	0.2 kg
Color	White	White
Material	High quality ABS plastic	High quality ABS plastic
Mounting Type	Wall-mount	Wall-mount & Rack-mount
Max. Fiber Count	4	4 or 8 (only for 900µm LC Duplex)
Splice Capability	N/A	Yes
Adapter Type	SC Simplex LC Duplex	SC Simplex LC Duplex
Accessories	Cross Recessed Head Screw (2pcs)	Self-tapping Screw (4pcs) EVA Transparent Tube (1pc)

Ordering Information



1 Type of Outlet
01 = Type-86
02 = 4-Port

2 Adapter Type
Type-86
A = SC Simplex
B = LC Duplex
4-Port
C = SC
D = LC Duplex (900µm Cable)
E = Others

3 Fiber Count
01 = 1 Fiber
02 = 2 Fibers
04 = 4 Fibers
08 = 8 Fibers

4 Fiber Type
SM = Singlemode
MM = Multimode

Example: **Ordering code :** WOL-01-B-04-SM
Item Description: Fiber Outlet, Type-86, LC Duplex. 4-fiber, Singlemode