

Optec provides highly flexible customized pre-terminated fiber trunking solution that suitable for use with different installation environments. These 100% factory-terminated and factory-tested assemblies eliminate field terminations, provides an easily installed, cost effective, and a highly reliable option for all installations.

Our ruggedized breakout assemblies are made of fanout tubing in 2.0mm or 3.0mm sheath. It branches out by using a round fanout kit with superior pulling force while light in weight. All assemblies are highly customizable with customer specified length and fiber mode, and available for all connector choices including FC, SC, ST, LC, and E2000.



Features and Benefits

Highly customizable fiber trunking solution

Made according to customer specified length & fiber mode, with different connector options

Stringent factory control in processes

High durability with superior optical performance

Straight or stagger breakout legs for option

Allows nest fit to address into your equipment

Superior optical performance

Telcordia compliant for end face geometry ensuring low loss budget

Ruggedized furcation legs: Round fanout kit with 2.0 mm or 3.0 mm legs to single-fiber connectors

For space saving installation and longer lifespan

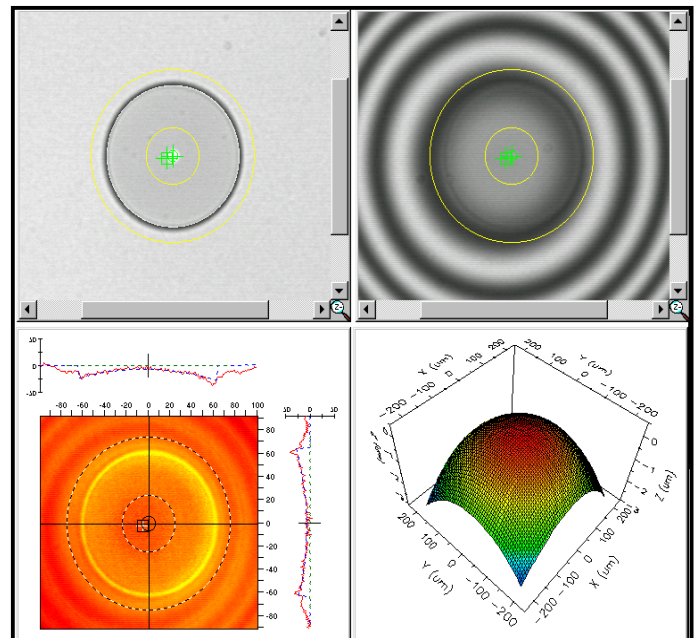
Available in singlemode (OS1/2), multimode (OM1~5) with customized length and structure

Satisfies client's needs in different industries

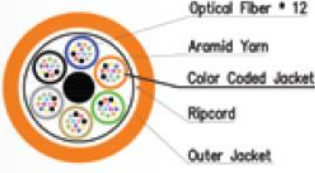
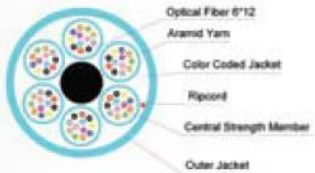



Optical Performance

Optical Performance **			
Type	Singlemode		Multimode
	UPC	APC	PC
Maximum Insertion Loss	≤ 0.3 dB	≤ 0.3 dB	≤ 0.3 dB
Typical Insertion Loss	0.2 dB	0.2 dB	0.2 dB
Return Loss	≥ 55 dB	≥ 65 dB	≥ 25 dB
Operating Temperature	-40°C to 80°C		-40°C to 80°C
Test Wavelength	1310nm		850nm
Geometric performance			
Manufactured to Telcordia standard GR-326-CORE			

** Above performance refers to Optec standard grade performance, flexible specification is available to fit for different installation needs, please contact our professional sales team for details



Cable Structures of Different Options

<p>Adventum Cable (Indoor / Outdoor) Example of 72-Fiber</p>  <p>Optical Fiber * 12 Aramid Yarn Color Coded Jacket Ripcord Outer Jacket</p>	<ul style="list-style-type: none"> • Indoor or outdoor use • Choices of Plenum and Riser outer jacket • Suitable for all backbone and horizontal cabling • Engineered to withstand harsh environment • Ruggedized design featuring dielectric strength members • Water blocking technology
<p>Distribution Cable (Indoor) Example of 72-Fiber</p>  <p>Optical Fiber 6*12 Aramid Yarn Color Coded Jacket Ripcord Central Strength Member Outer Jacket</p>	<ul style="list-style-type: none"> • Indoor use • Choices of Plenum, Riser and LSZH outer jacket • Suitable for in-building backbone and horizontal cabling • 900um tight buffered coating fiber with subunits • Flexible subunit design to provide appropriate fiber protection while maintaining good cable bending flexibility
<p>Breakout Cable (Indoor) Example of 48-Fiber</p>  <p>Optical Fiber Aramid Yarn 2.0mm Jacketed Tube Central Strength Member Outer Jacket</p>	<ul style="list-style-type: none"> • Indoor use • Choices of Riser and LSZH outer jacket • Consists of individual sub-cables within a primary outer cable sheath to provide extra protection on fiber • Enables individual routing of fibers for termination and maintenance
<p>Jacketed Ribbon Cable (Indoor) Example of 12-Fiber</p>  <p>Optical Fiber Ribbon Aramid Yarn Outer Jacket</p>	<ul style="list-style-type: none"> • Indoor use • Choices of Riser and LSZH outer jacket • Suitable for equipment and closet areas • Ribbonized 250um primary coated fiber in 4 / 8 / 12-channels • High fiber density and light in weight
<p>Mini-core Cable (Indoor) Example of 72-Fiber</p>  <p>Optical Fiber * 12 Aramid Yarn Sub-Unit Jacket Ripcord Central Strength Member Outer Jacket</p>	<ul style="list-style-type: none"> • Indoor use • Choices of Plenum, Riser and LSZH outer jacket • Suitable for installation locations require high flexibility and small bend radius • All dry loose tube 250um primary coating fiber especially suitable for MPO / MTP application • Compact in size and light in weight

Fiber Performance Specifications

	ADVENTUM				MINI-CORE			
	OS1 Singlemode (9/125mm)	OM1 Multimode (62.5/125mm)	OM2 Multimode (50/125mm)	*OM3 Multimode (50/125mm 10 Gig)	OS1 Singlemode (9/125mm)	OM1 Multimode (62.5/125mm)	OM2 Multimode (50/125mm)	*OM3 Multimode (50/125mm 10 Gig)
Wavelength (nm)	1310/1550	850/1300	850/1300	850/1300	1310/1550	850/1300	850/1300	850/1300
Attenuation (db/km)	0.5/0.4	3.5/1.0	3.0/1.0	3.0/1.0	0.4/0.3	3.5/1.5	3.5/1.5	3.5/1.5
Bandwidth (MHz*km)	N/A	200/500	950/500	2000/500	N/A	≥ 300 / ≥ 300	≥ 200 / ≥ 300	≥ 1500 / ≥ 500

* OM3 10 Gig transmission distance at 850/1300 is 300 meters

Ordering Information



1 Fiber Count

- 04 = 4-Fiber
- 08 = 8-Fiber
- 12 = 12-Fiber
- 16 = 16-Fiber
- 24 = 24-Fiber
- 36 = 36-Fiber
- 48 = 48-Fiber
- 64 = 64-Fiber
- 72 = 72-Fiber
- 96 = 96-Fiber
- H4 = 144-Fiber

2 A- & B-End Connector

- A = FC
- B = SC
- C = ST
- D = LC
- E = MU
- F = E2000
- See notes (1)

3 Polishing Type

- 1 = PC
- 2 = UPC
- 3 = APC 8-degree
- See notes (2)

4 Fiber Type

- SM = OS2 Singlemode
- M1 = OM1 (62.5/125)
- M2 = OM2 (50/125)
- M3 = OM3 (50/125)
- M4 = OM4 (50/125)
- See notes (3)

5 Cable Structure

- A = Minicore Cable
- B = Distribution Cable
- C = Breakout Cable
- D = Jacketed Ribbon Cable
- E = Adventum Cable
- See note (4)

6 Jacket Material

- P = Plenum (OFNP)
- R = Riser (OFNR)
- L = Low Smoke Zero Halogen (LSZH)

7 Furcation Length on Both Ends

- 0300 = 300 mm (standard)
- 0500 = 500mm
- xxxx = Customized Length
- See notes (5) & (6)

8 Overall Cable Length

- xxx = 001~999
- (please specify)

9 Unit of Measure

- F = Feet
- M = Meter

10 Pulling Eye

- 1 = On A-End
- 2 = On B-End
- 3 = On Both Ends
- 4 = None

NOTES

- (1) Connectors other than the above are available, please specify and contact our sales team for more details
- (2) We provide APC with cone ferrule 8 degree angled polishing, if stepped ferrule or other angled polishing is needed, please specify and check with our sales team for more details
- (3) Fiber types other than the above are available, include G657A1/2/3, please contact our sales team for more details
- (4) Cable structure other than the above are available, please contact our sales team for more details
- (5) Maximum furcation length on B-end is 1000mm
- (6) Furcation length tolerance: +50/-0 mm

Optec Technology Limited.

Unit 1701, 17/F., North Tower, World Finance Centre, 19 Canton Road, Kowloon, Hong Kong.
Tel: +852-2301-8148 | www.optec.com.hk | sales@optec.com.hk

Assembly Structure Illustration

Example:

Ordering code : **RB-12-D-D-2-SM-A-L-0500-005-M-4**

Item Description: **Ruggedized Breakout Assembly**, 12-Fiber, LC/UPC, Singlemode, Minicore Cable, Low Smoke Zero Halogen (LSZH), Furcation Length 500mm, Overall Length 5 Meters, No Pulling Eye

