

VAL-MAX SERIES

HIGH DENSITY MULTI-FIBER SOLUTIONS

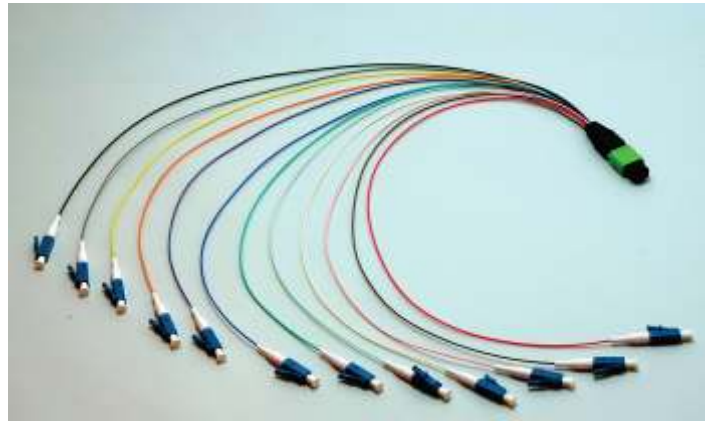
Reference No: MK-0024/3-10

Version: 3.0

MPO / MTP HYDRA CABLE ASSEMBLIES

Features and Applications

- For installing inside easy-plug cassette modules
- MPO/MTP connector assembled with 0.9mm cable to single-fiber connectors
- 1st end assembled with MPO/MTP 12-fiber interface, no pin (Female) or with pins (Male) for choices
- 2nd end assembled with single-fiber connector interface, full range of connectors available for choices (FC, SC, ST, LC, MTRJ, E2000, etc.)
- 12-colored 0.9mm cable according to TIA-568C to cater for easy fiber loading



The information and specification in this document are subjected to change without notice.

Optec Technology Ltd.

Unit 701-702, 7/F., Tower 2, Silvercord, 30 Canton Road, Kowloon, Hong Kong.

Tel: +852-2301-8148 Fax: +852-2367-7978

www.optec.com.hk Email: sales@optec.com.hk

Your Valuable Partner in
Connectivity Business

MPO / MTP HYDRA CABLE ASSEMBLIES

Cable Assemblies Technical Information

Polarity

All Optec's MTP (MPO) cable assemblies in this document are having **Straight Polarity** (A-to-A, B-to-B). Cross Polarity (A-to-B, B-to-A) or Pair Flip polarity is available, please contact our sales team for details.

Performance of Assemblies

• MTP / MPO Termination

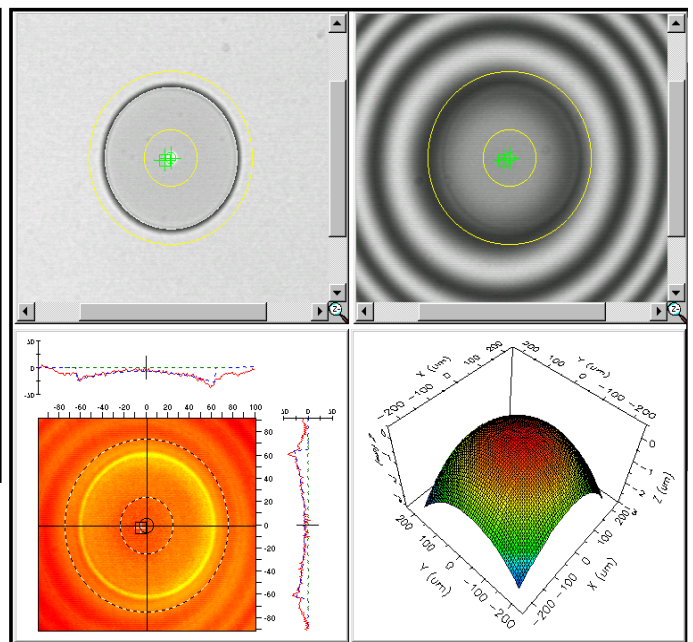
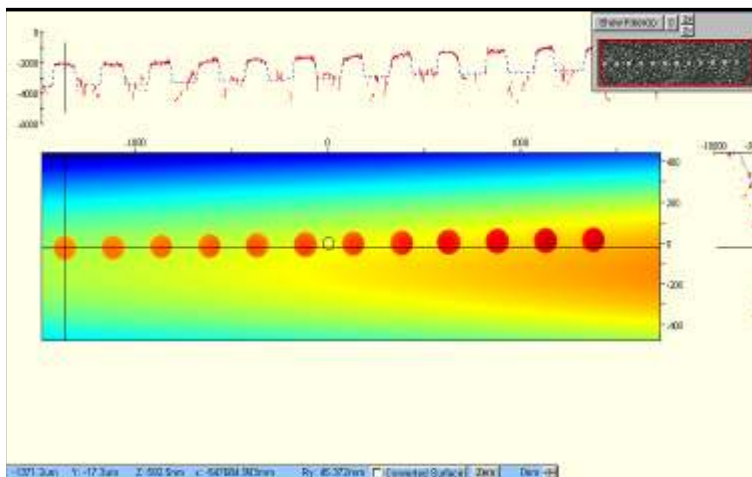
Optical Performance **					
Performance	Type	Singlemode (APC polish)		Multimode (PC / Flat Polish)	
		Standard	Elite Low Loss	Standard	Elite Low Loss
Maximum Insertion Loss		≤ 0.75dB	≤ 0.35dB	≤ 0.60dB	≤ 0.35dB
Return Loss		≥ 50dB		N/A	
Operating Temperature		-40°C to 80°C		-40°C to 80°C	
Test Wavelength		1310nm		850nm	

• Generic Connector Termination

Optical Performance **				
Performance	Type	Singlemode		Multimode
		UPC	APC	PC
Maximum Insertion Loss		≤ 0.3 dB	≤ 0.3 dB	≤ 0.3 dB
Typical Insertion Loss		0.2 dB	0.2 dB	0.2 dB
Return Loss		≥ 55 dB	≥ 65 dB	≥ 25 dB
Operating Temperature		-40°C to 80°C		-40°C to 80°C
Test Wavelength		1310nm		850nm

Geometric performance
Manufactured to Telcordia standard GR-326-CORE

** Above performance refers to Optec standard grade performance, flexible specification is available to fit for different installation needs, please contact our professional sales team for details



The information and specification in this document are subjected to change without notice.

Optec Technology Ltd.

Unit 701-702, 7/F., Tower 2, Silvercord, 30 Canton Road, Kowloon, Hong Kong.
Tel: +852-2301-8148 Fax: +852-2367-7978
www.optec.com.hk Email: sales@optec.com.hk

Your Valuable Partner in Connectivity Business

MPO / MTP HYDRA CABLE ASSEMBLIES

Ordering Information



(1) FIBER COUNT

08 = 8-Fiber
12 = 12-Fiber

(2) A-END CONNECTOR

M = MTP Male (with pins)
F = MTP Female (no pins)

See notes (1) & (2)

(3) B-END CONNECTOR

A = FC
B = SC
C = ST
D = LC
E = MTRJ (Female)
F = E2000

See notes (3), (4), (5), (6)

(7) UNIT OF MEASURE

N = Inch
C = Centimeter (cm)

(6) OVERALL CABLE LENGTH

050 = 50cm
070 = 70cm
xxx = 001-999 (please specify)

See notes (8), (9), & (10)

(5) CABLE JACKET TYPE

R = Riser (OFNR)
L = Low Smoke Zero Halogen (LSZH)

(4) FIBER TYPE

SM = OS1 Singlemode
M1 = OM1 (62.5/125)
M2 = OM2 (50/125)
M3 = OM3 (50/125 10 Gig)

Unless otherwise specified, cable jacket is TIA-12 color

See note (7)

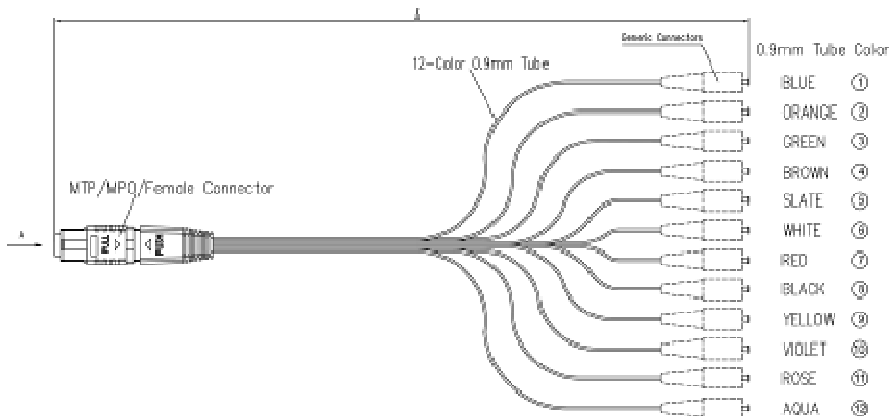
NOTES

- (1) If singlemode is chosen, MTP endface polishing will be APC
- (2) If multimode is chosen, MTP endface polishing will be Flat
- (3) If singlemode is chosen, B-End connector polishing will be UPC. Please specify and contact our sales team if Singlemode APC on B-End is needed
- (4) If multimode is chosen, B-End connector polishing will be PC
- (5) Connectors other than the above are available, please specify and contact our sales team
- (6) For Hydra items, shortest overall length is 20cm (0.2 meters), maximum overall length is 150cm (1.5 meters)
- (7) OM3 (50/125 10 Gig) is for Laser speed transmission up to 300 meters. 10 Gig fiber for transmission up to 550 meters is available upon request, please contact our sales team for details
- (8) For Hydra items, all B-end connectors are NOT fitted with duplex clip (if applicable). Please contact our sales team if duplex clips are required
- (9) If overall length <100 cm, length tolerance is +50/-0 mm
- (10) If overall length >100 cm, length tolerance is +150/-0 mm

Assembly Structure Illustration

EXAMPLE

Catalogue No.: HN-12-F-D-M2-12-R-070-C
Item Description: Hydra Assembly, 12-Fiber, MTP Female (no pin) to LC, Multimode (OM2), TIA 12 Color, Riser Cable, Overall Cable Length 70 cm



The information and specification in this document are subjected to change without notice.

Optec Technology Ltd.

Unit 701-702, 7/F., Tower 2, Silvercord, 30 Canton Road, Kowloon, Hong Kong.
Tel: +852-2301-8148 Fax: +852-2367-7978
www.optec.com.hk Email: sales@optec.com.hk

Your Valuable Partner in Connectivity Business